



SPLIT SHAFT PTO SPECIFICATIONS FABCO PTO-170-23

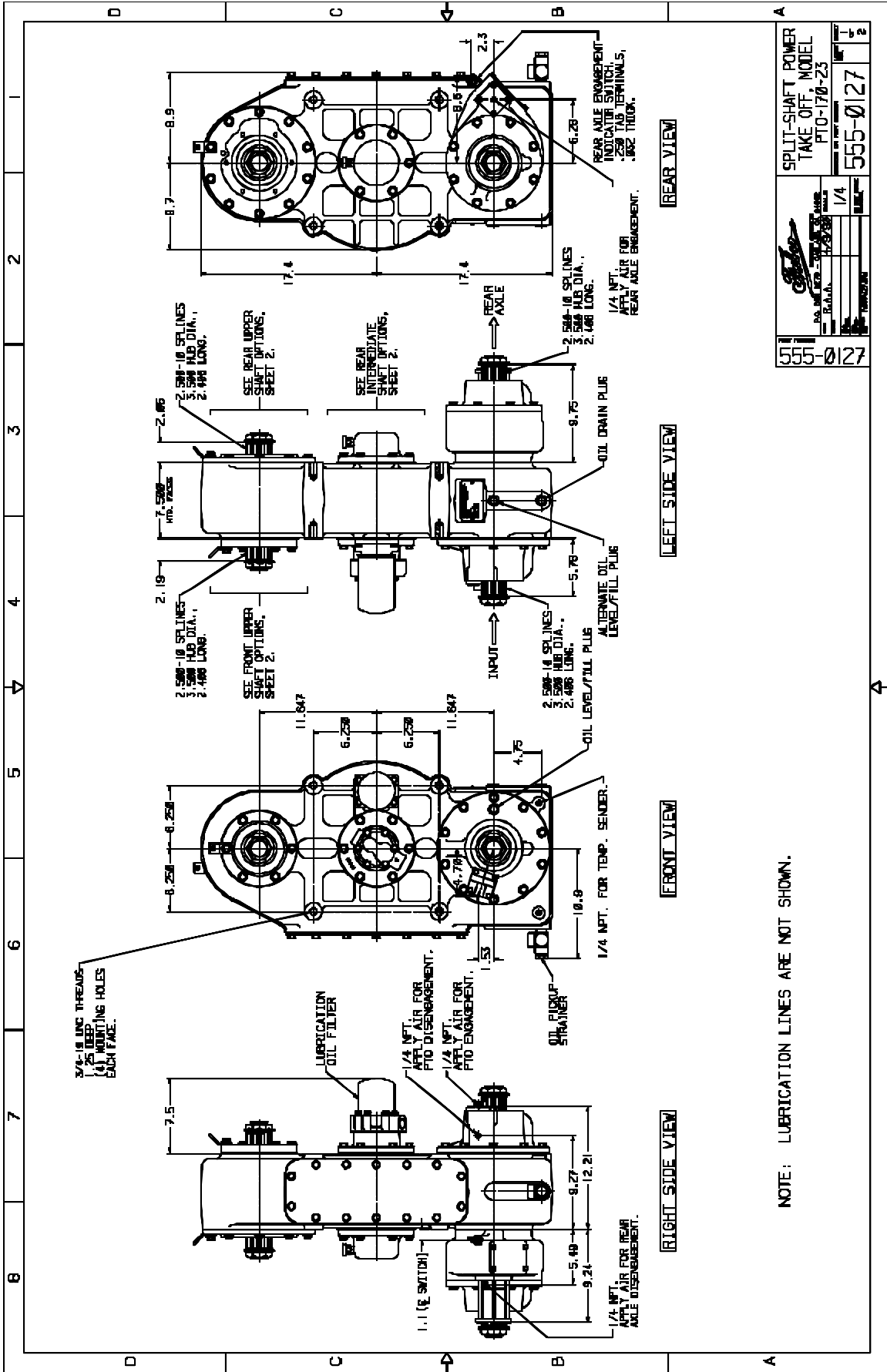
The Fabco Model PTO-170-23 is a single-speed, three-shaft, constant mesh design featuring an internal declutch mechanism for either roading or PTO operation

Ratings – Nominal *

Output Torque – PTO	12,000 Lb. Ft.
Output Torque – Rear Axle	15,000 Lb. Ft.
Input Horsepower	450 HP
Input Speed	3,000 RPM
Ratio	1:1
Gear Type	Helical, Case Hardened
Shaft Sizes	
Input and Rear Axle Output	2.50", 10 Parallel Spline
Shaft Spacing (Drop)	23.25"
Shift Mechanism	Integral Air Cylinders
Bearings	Tapered Roller
Lubrication System	Lubrication Pump & Spin-on Filter
Lubricant	SAE 50 or 90
Oil Capacity	6.50 Quarts
Weight – Dry	600 Lbs.
Housing	Cast Iron

* All ratings nominal. Actual capacities determined based upon review of application data by Fabco Engineering

OPTIONS:	Upper PTO Outputs Front or Rear Upper Declutchable PTO Outputs Front or Rear Upper Direct Mount Hydraulic Pump Drives Front or Rear Upper Declutchable Drive Mount Hydraulic Pump Drives Front or Rear
-----------------	---



555-0127		555-0127	
DAVID BROS. CO. INC.		DAVID BROS. CO. INC.	
P.O. BOX 148		P.O. BOX 148	
R.A.P.A.		R.A.P.A.	
1/4		1/4	
PTO-170-23		PTO-170-23	
SPLIT-SHAFT POWER TAKE OFF, MODEL		SPLIT-SHAFT POWER TAKE OFF, MODEL	
555-0127		555-0127	

