



---

---

## SPLIT SHAFT PTO SPECIFICATIONS FABCO PTO-170

The Fabco Model PTO-170 is a single-speed, three-shaft, constant mesh design featuring an internal declutch mechanism for either roading or PTO operation

**Ratings – Nominal \***

Output Torque – PTO	12,000 Lb. Ft.
Output Torque – Rear Axle	15,000 Lb. Ft.
Input Horsepower	450 HP
Input Speed	3,000 RPM

**Ratio** 1:1

**Gear Type** Helical, Case Hardened

**Shaft Sizes**

Input and Rear Axle Output 2.50", 10 Parallel Spline

**Shaft Spacing (Drop)** 16.25"

**Shift Mechanism** Integral Air Cylinders

**Bearings** Tapered Roller

**Lubrication System** Lubrication Pump & Spin-on Filter

**Lubricant** SAE 50 or 90 ①

**Oil Capacity** 6.50 Quarts

**Weight – Dry** 400 Lbs.

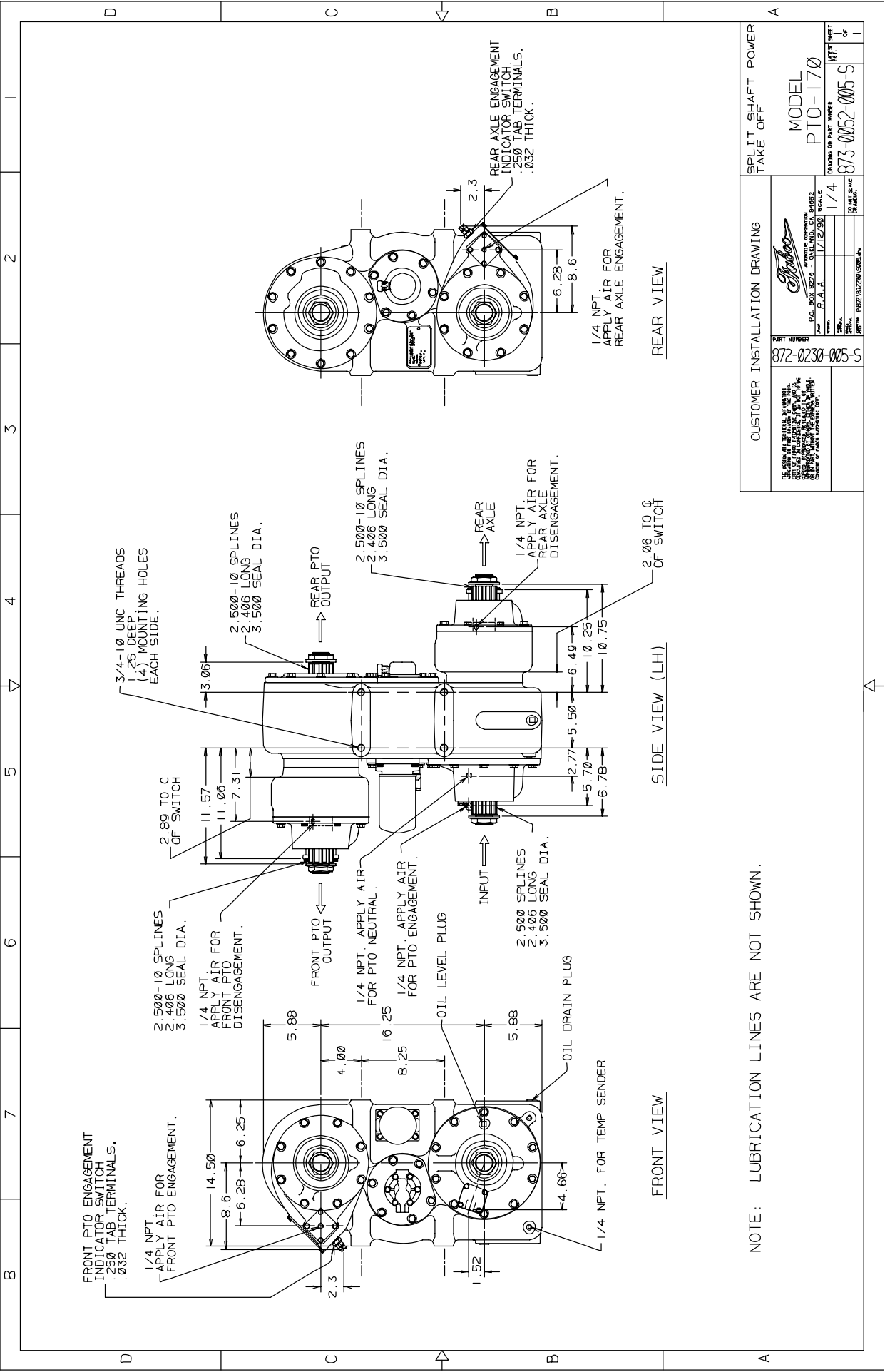
**Housing** Cast Iron

\* All ratings nominal. Actual capacities determined based upon review of application data by Fabco Engineering

---

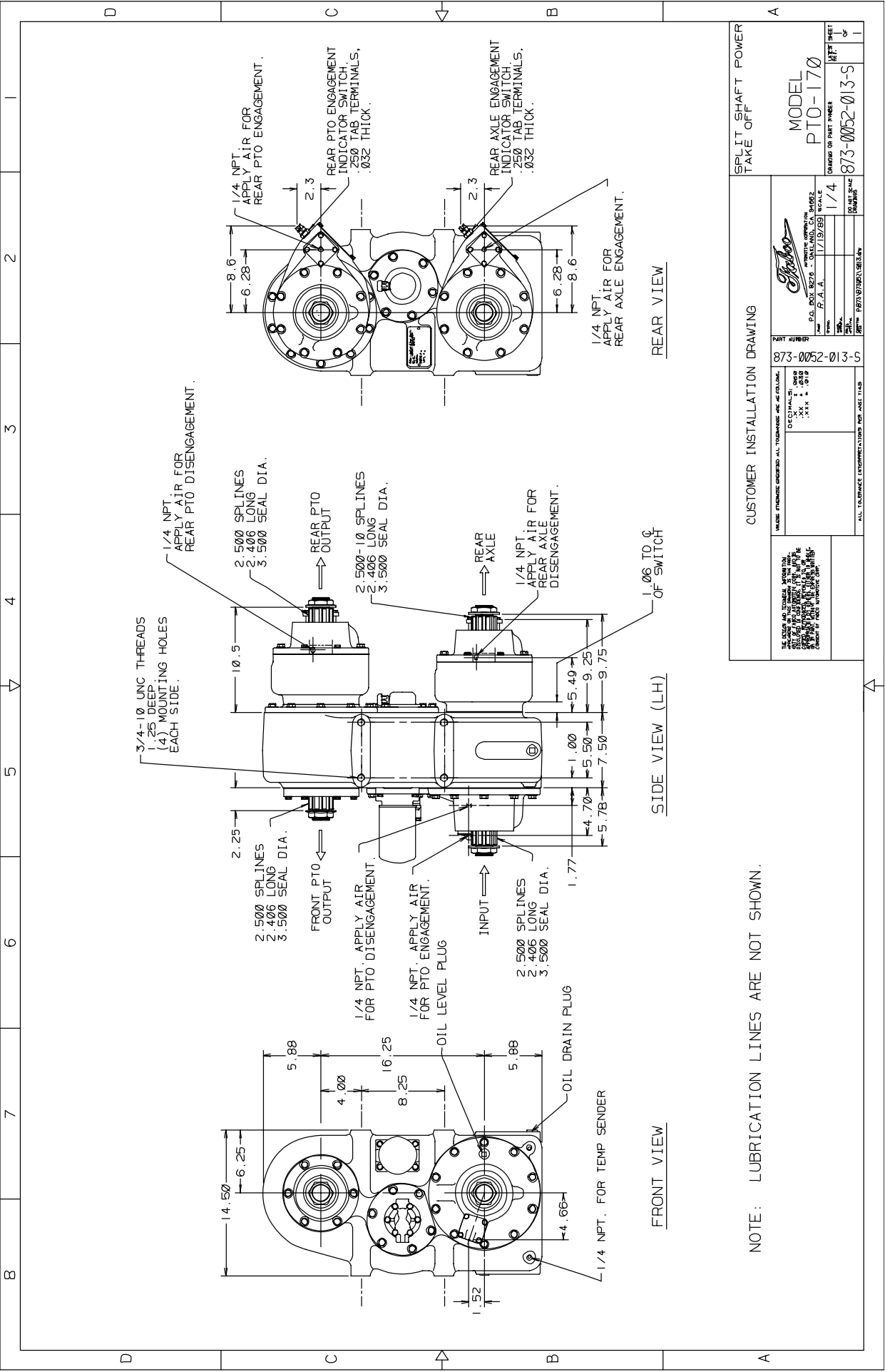
**OPTIONS:** Upper PTO Outputs Front or Rear  
Upper Declutchable PTO Outputs Front or Rear  
Upper Direct Mount Hydraulic Pump Drives Front or Rear  
Upper Declutchable Drive Mount Hydraulic Pump Drives Front or Rear

---



NOTE: LUBRICATION LINES ARE NOT SHOWN.

CUSTOMER INSTALLATION DRAWING		SPLIT SHAFT POWER TAKE OFF	
THE INFORMATION ON THIS DRAWING IS THE PROPERTY OF JOHN DEERE AND IS NOT TO BE REPRODUCED OR TRANSMITTED IN ANY FORM OR BY ANY MEANS, ELECTRONIC OR MECHANICAL, WITHOUT PERMISSION IN WRITING FROM JOHN DEERE.		MODEL <b>PTO-170</b>	
PART NUMBER <b>872-0230-005-S</b>		DRAWING OR PART NUMBER <b>873-0052-005-S</b>	
P.O. BOX 3270 - JOHN DEERE, MOBILE, AL 36688 U.S.A.		SCALE <b>1/4</b>	
DATE <b>11/12/90</b>		SHEET <b>1</b>	
DRAWN BY <b>PREL/BJZ/DA/US/87</b>		CHECKED BY <b>DA/US/87</b>	



CUSTOMER INSTALLATION DRAWING

PART NUMBER: 873-0052-013-5

MODEL: PTO-170

DRAWING OR PART NUMBER: 873-0052-013-5

SPLIT SHAFT POWER TAKE OFF

1/4 NPT SHEET

OF

1

DATE: 1/19/99

SCALE: 1/4

DRAWN BY: [Signature]

CHECKED BY: [Signature]

APPROVED BY: [Signature]

ALL DIMENSIONS UNLESS OTHERWISE SPECIFIED ARE IN INCHES

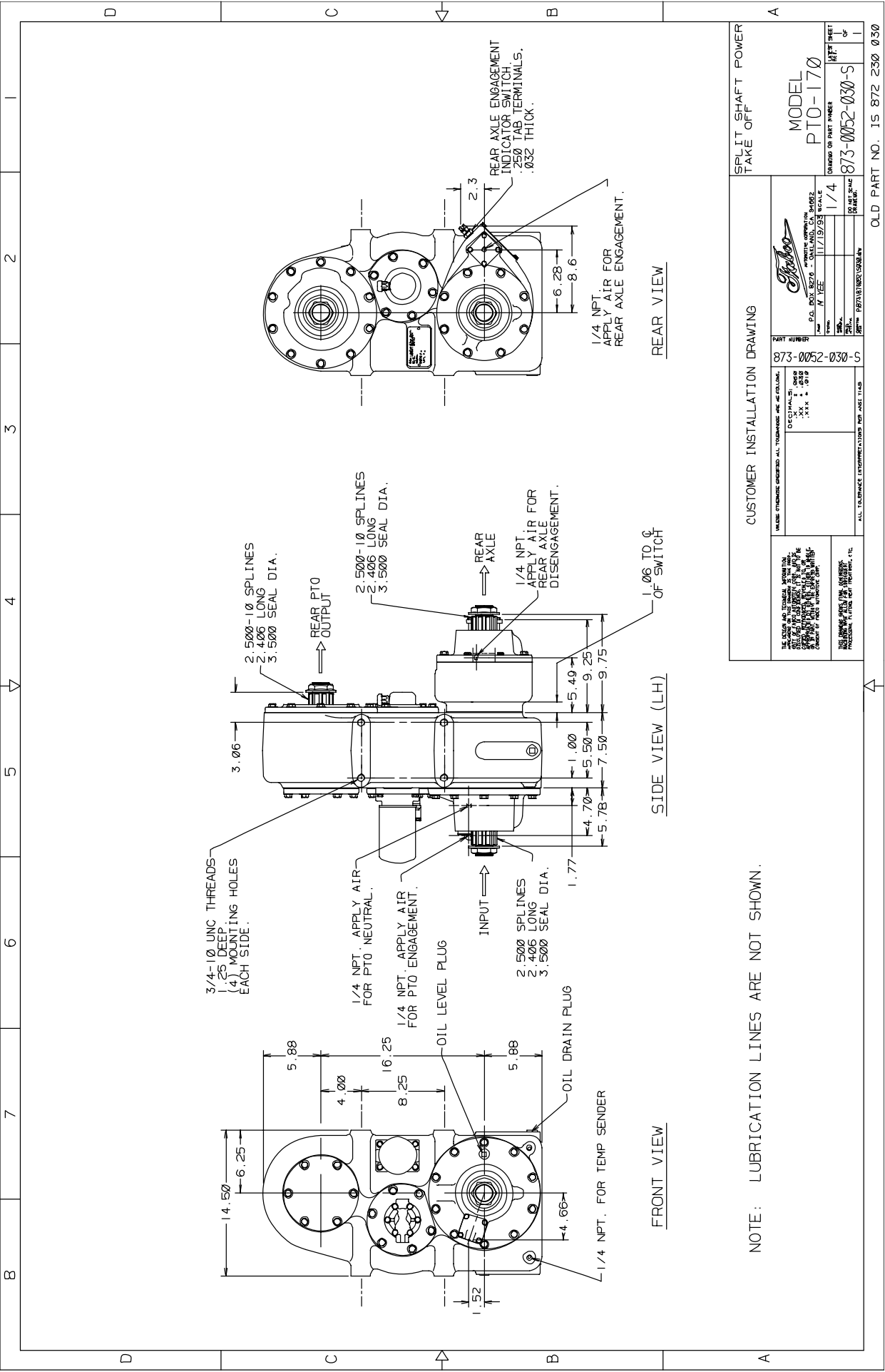
UNLESS OTHERWISE SPECIFIED ALL DIMENSIONS ARE IN INCHES

DECIMALS: .0008  
FRACTIONS: 1/32  
TOLERANCES: .005  
DIMENSIONS: .005

THE USER ASSUMES ALL RESPONSIBILITY FOR THE PROPER USE OF THIS DRAWING AND ASSUMES ALL LIABILITY FOR ANY DAMAGE OR INJURY RESULTING FROM THE USE OF THIS DRAWING.

NOTE: LUBRICATION LINES ARE NOT SHOWN.





CUSTOMER INSTALLATION DRAWING

MAKE SURE TO READ ALL DIMENSIONS AND TOLERANCES. DIMENSIONS ARE IN INCHES UNLESS OTHERWISE SPECIFIED. TOLERANCES ARE: .005" - .015" ± .002 .015" - .030" ± .003 .030" - .060" ± .004 .060" - .120" ± .005 .120" - .250" ± .006 .250" - .500" ± .008 .500" - 1.000" ± .010 1.000" - 2.000" ± .015 2.000" - 5.000" ± .020 5.000" - 10.000" ± .030 10.000" - 25.000" ± .040 25.000" - 50.000" ± .050 50.000" - 100.000" ± .060 100.000" - 250.000" ± .080 250.000" - 500.000" ± .010"		PART NUMBER <b>873-0052-030-5</b>
ALL DIMENSIONS UNLESS OTHERWISE SPECIFIED PER ASME Y14.5		
MODEL <b>PTO-170</b>		
DRAWING OR PART NUMBER <b>873-0052-030-5</b>		
SHEET <b>1</b> OF <b>1</b>		

SPLIT SHAFT POWER TAKE OFF

NOTE: LUBRICATION LINES ARE NOT SHOWN.

OLD PART NO. 15 872 230 030