



---

---

## TRANSFER CASE SPECIFICATIONS FABCO TC-143

The Fabco Model TC-143 Transfer Case is a single-speed, three-shaft, constant mesh design featuring a declutch mechanism for front axle engagement.

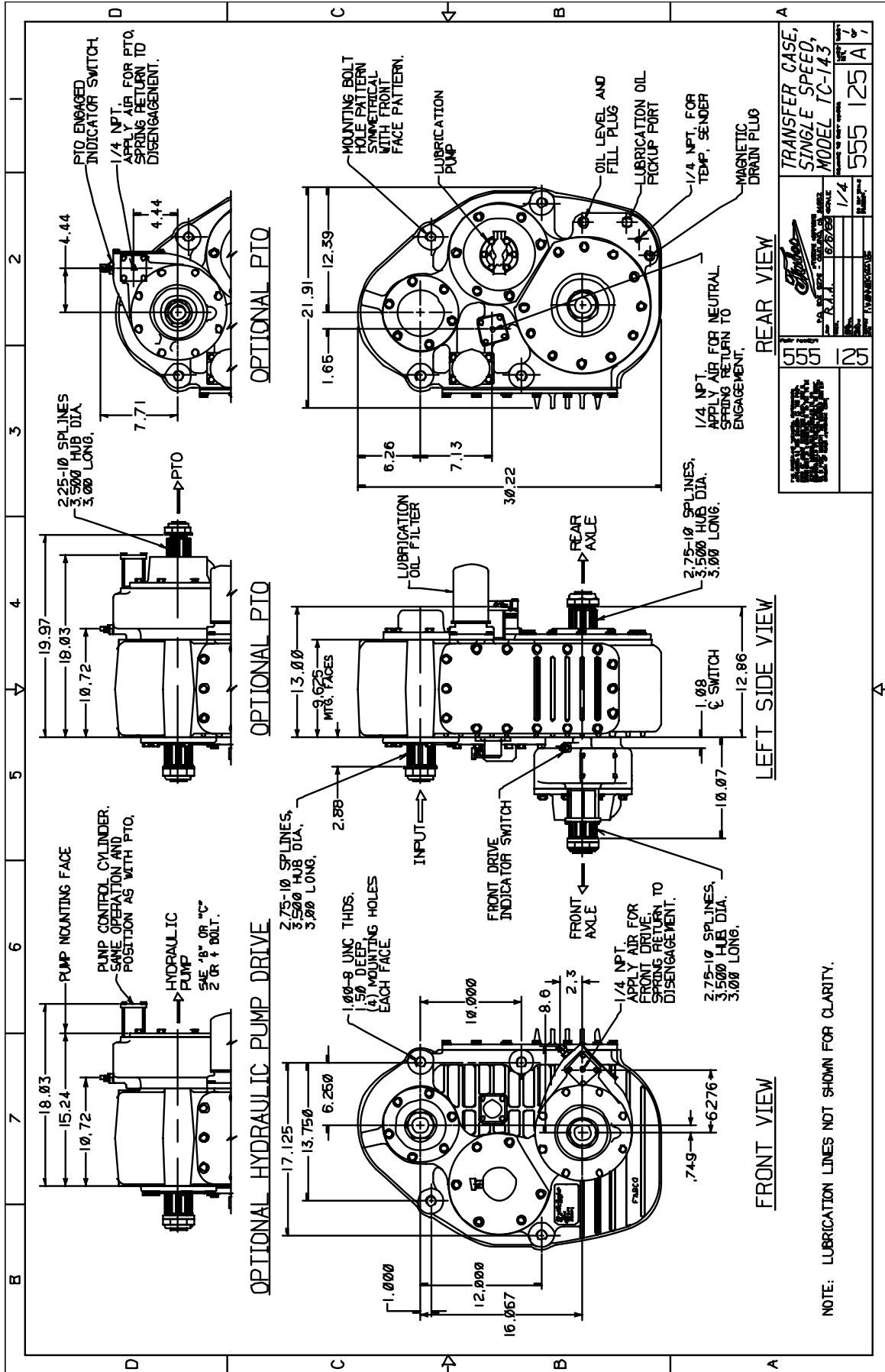
<b>Ratings – Nominal *</b>	
Input Torque	20,000 Lbs. Ft.
Input Horsepower	600 HP.
Input Speed	3,000 RPM
<b>Ratio</b>	1:1
<b>Gear Type</b>	Helical, Case Hardened
<b>Shaft Sizes</b>	
Input/Front & Rear Output	2.75 Inches, 10 Parallel Spline
<b>Shaft Spacing (Drop)</b>	16 Inches
<b>Shift Mechanism</b>	Integral Air Cylinders
<b>Bearings</b>	Tapered Roller
<b>Lubrication System</b>	Splash
<b>Lubricant</b>	SAE 50 or SAE 90
<b>Oil Capacity</b>	15.50 Quarts
<b>Housing</b>	Cast Iron
<b>Weight – Dry</b>	825 Lbs.

\* All ratings nominal. Actual capacities determined based upon review of application data by Fabco Engineering

---

<b>OPTIONS:</b>	Full Power PTO, Air Shiftable Direct Mount Hydraulic Pump Pad Lubrication Pump & Spin-on Filter ( Standard with PTO )
-----------------	---

---



		TRANSFER CASE, SINGLE SPEED, MODEL TC-143
DATE: 10/27/83 BY: R.J.J. CHECKED: 10/27/83 APPROVED:	SCALE: 1/4" = 1"	PART NO.: 555 125 A 1

NOTE: LUBRICATION LINES NOT SHOWN FOR CLARITY.