



AUTOMOTIVE CORPORATION

TRANSFER CASE SPECIFICATIONS FABCO TC-170-23

The Fabco Model TC-170-23 Transfer Case is a single-speed, three-shaft, constant mesh design featuring an internal declutch mechanism for front axle engagement.

Ratings – Nominal *

Input Torque	12,000 Lb. Ft.
Input Horsepower	15,000 Lb Ft (Through shaft) 450 HP.
Input Speed	3,000 RPM

Ratio 1:1

Gear Type Helical, Case Hardened

Shaft Sizes

Input/Front & Rear Output 2.50 Inches, 10 Parallel Spline

Shaft Spacing (Drop) 23.29 Inches

Shift Mechanism Integral Air Cylinders

Bearings Tapered Roller

Lubrication System Lubrication Pump & Spin-on Filter

Lubricant SAE 50 or SAE 90

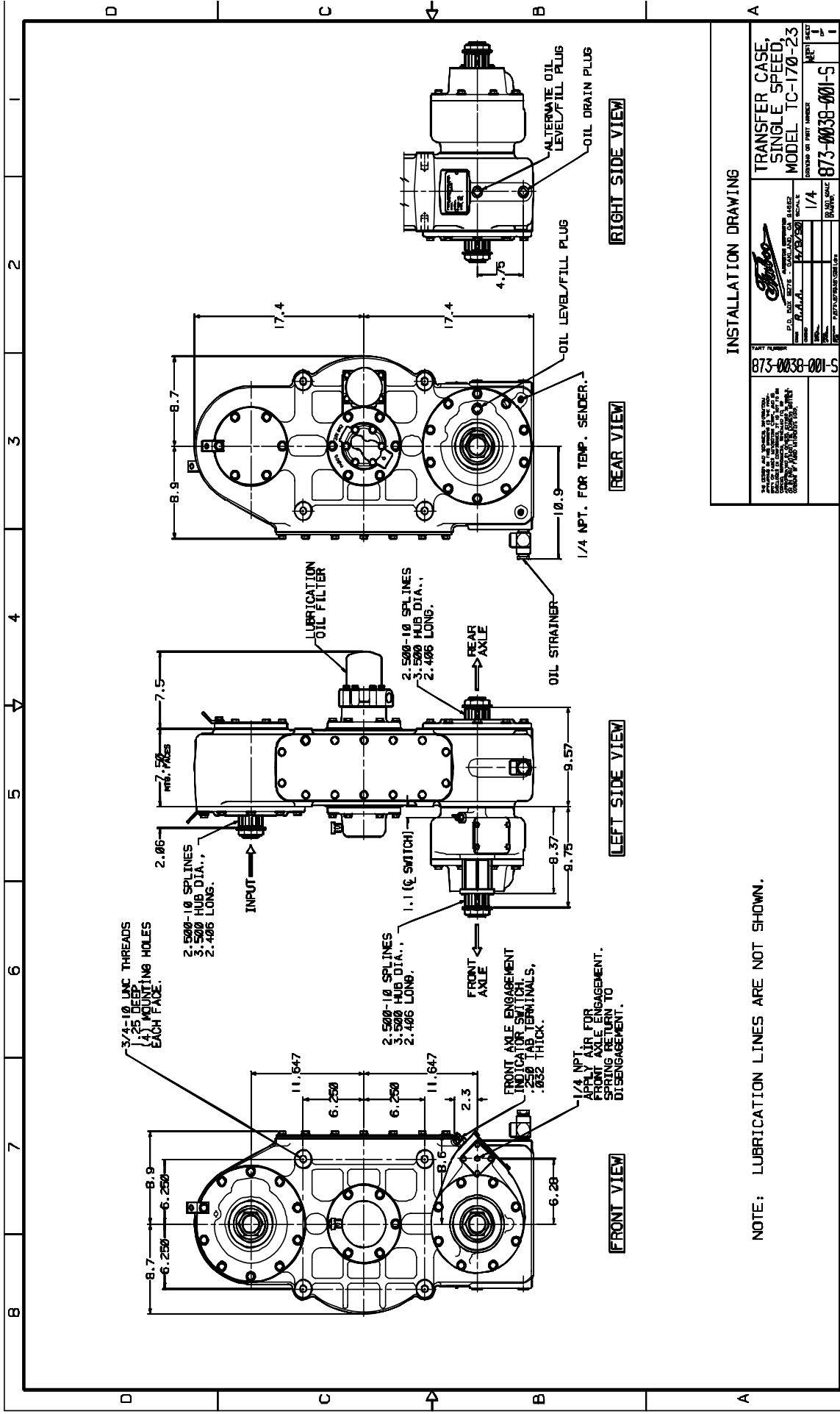
Oil Capacity 6.50 Quarts

Weight – Dry 600 Lbs. Est.

Housing Cast Iron

* All ratings nominal. Actual capacities determined based upon review of application data by Fabco Engineering

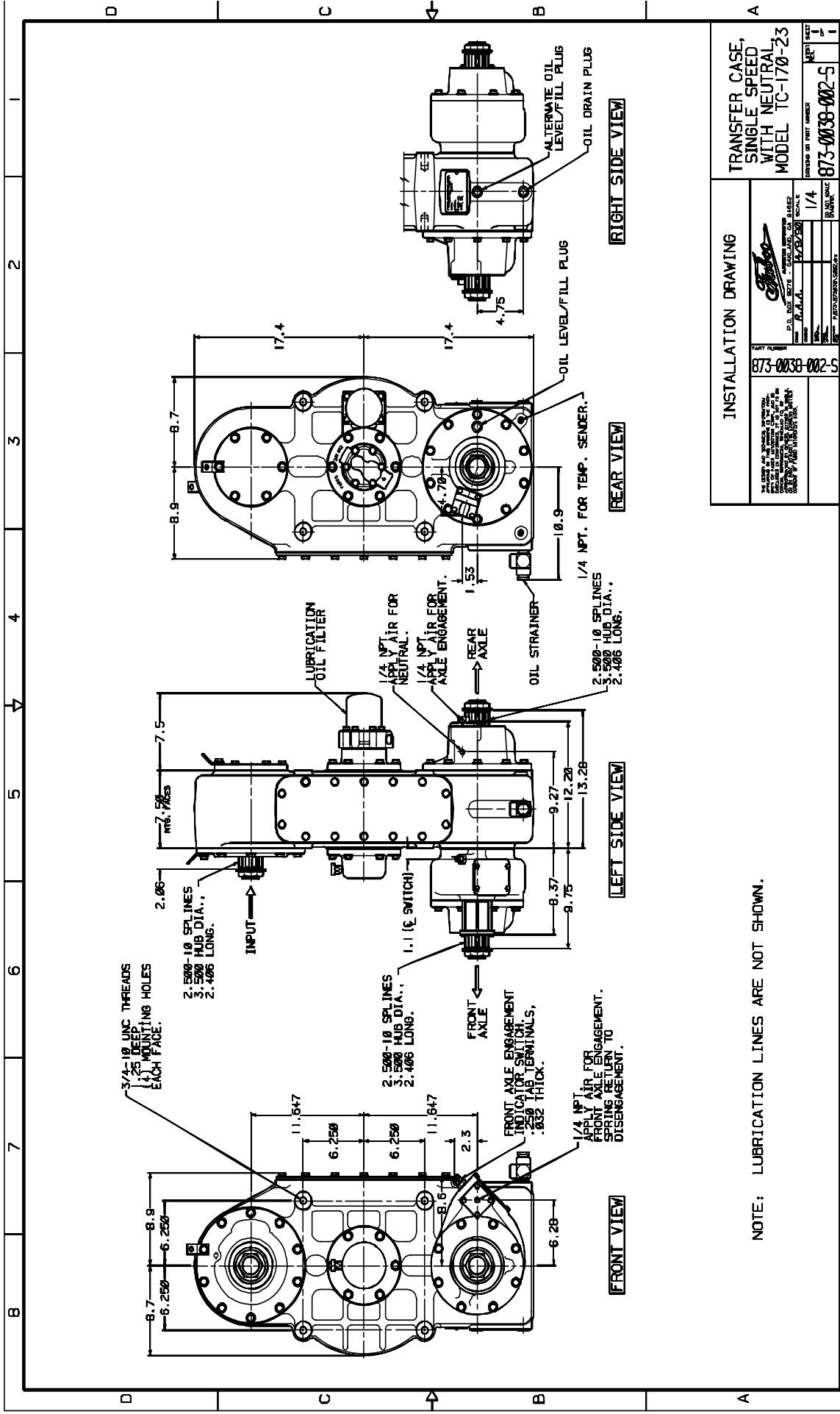
OPTIONS: Full Power PTO, Air Shifted
Direct Mount Hydraulic Pump Drive



INSTALLATION DRAWING

873-0038-001-5 <small>THIS DRAWING IS THE PROPERTY OF THE COMPANY AND IS NOT TO BE REPRODUCED OR TRANSMITTED IN ANY FORM OR BY ANY MEANS, ELECTRONIC OR MECHANICAL, INCLUDING PHOTOCOPYING, RECORDING, OR BY ANY INFORMATION STORAGE AND RETRIEVAL SYSTEM.</small>		TRANSFER CASE SINGLE SPEED MODEL TC-170-23 DRAWING OR PART NUMBER 873-0038-001-5 REV. 1 DATE 5/13/2000 SCALE 1/4" DRAWN BY B.A.M.A. CHECKED BY B.A.M.A. APPROVED BY B.A.M.A.	
---	--	--	--

NOTE: LUBRICATION LINES ARE NOT SHOWN.



NOTE: LUBRICATION LINES ARE NOT SHOWN.

INSTALLATION DRAWING

**TRANSFER CASE,
SINGLE SPEED
WITH NEUTRAL
MODEL TC-170-23**

DRAWING OR PART NUMBER: **873-0038-002-5**

D.P. NO. 2001 - 1970 (REV. 10-1970) SCALE: **1/4"**

DESIGNED BY: **B.A.M.A.** CHECKED BY: **B.A.M.A.**

DRAWN BY: **B.A.M.A.** DATE: **8/23/50**

PART NUMBER: **873-0038-002-5**

REV. 1

