



TRANSFER CASE SPECIFICATIONS FABCO TC-170

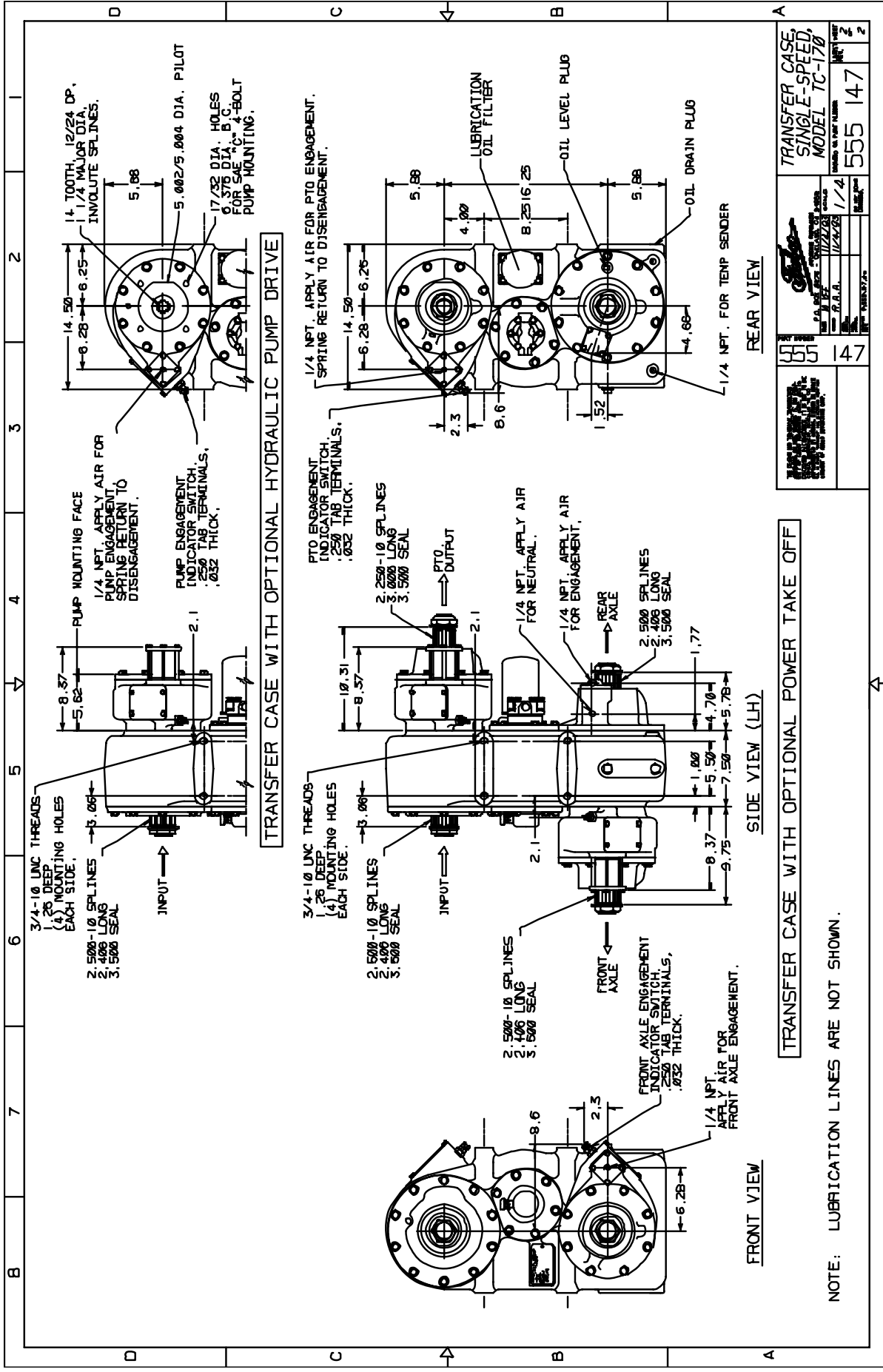
The Fabco Model TC-170 Transfer Case is a single-speed, three-shaft, constant mesh design featuring a declutch mechanism for front axle disengagement. The case is available with PTO declutches and a choice of front/rear proportioning differentials.

Ratings – Nominal *

Maximum Input Torque	12,000 Lb. Ft. 15,000 Lb Ft (Through Shaft)
Maximum Input Horsepower	450 HP.
Maximum Input Speed	3,000 RPM
Ratio	1:1
Gear Type	Helical, Case Hardened
Shaft Sizes	
Input/Front & Rear Output	2.50 Inches, 10 Parallel Spline
Shaft Spacing (Drop)	16.25 Inches
Shift Mechanism	Integral Air Cylinders
Bearings	Tapered Roller
Lubrication System	Splash
Lubricant	SAE 50 or 90
Oil Capacity	6.50 Quarts
Weight – Dry	400 Lbs.
Housing	Cast Iron.

* All ratings nominal. Actual capacities determined based upon review of application data by Fabco Engineering

OPTIONS:	50%/50% Bevel Gear Proportioning Differential 33%/67% Planetary Proportioning Differential Full Power PTO, Air Shifted Direct Mount Hydraulic Pump Drive Lubrication Pump and Spin-on Filter (Standard with PTO)
-----------------	--



NOTE: LUBRICATION LINES ARE NOT SHOWN.

TRANSFER CASE, SINGLE-SPEED, MODEL TC-170		REV. 2
DATE	BY	CHKD.
11/27/78	1/4	
11/24/78		
1/4		
555	147	